



Innovative Photonic Solutions

DRI's

Diffuse Ring Illuminator

KEY FEATURES

- DRI, US Patent No. 5,752,767
- Extremely High Uniformity (+/- 5%)
- Low Angle Structure
- Diffuse Darkfield Illuminator

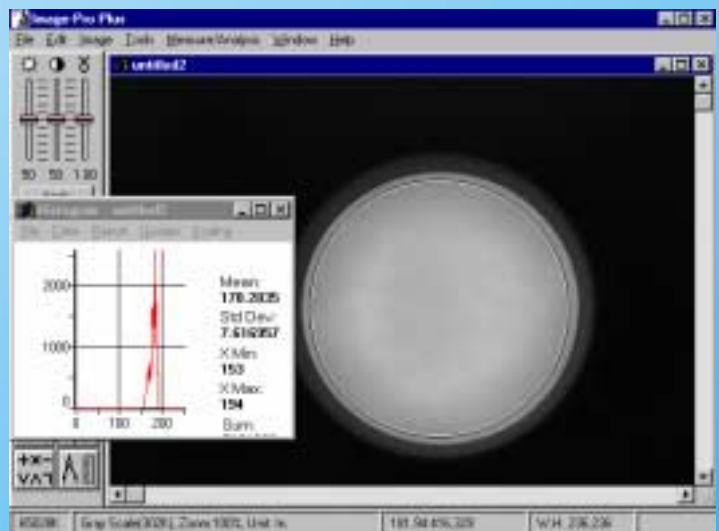
APPLICATIONS

- Surface Defects
- Scribed Characters
- Raised Objects
- High Contrast on Flat Surfaces
- Reflective and Non-Reflective Surfaces

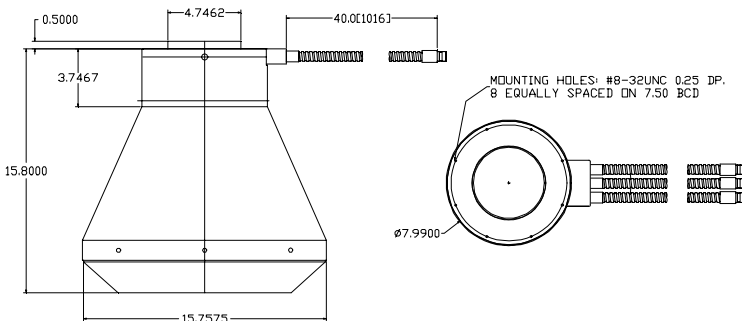
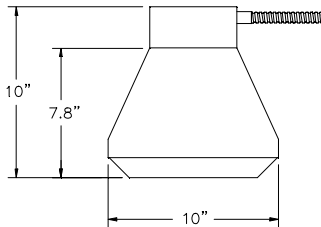
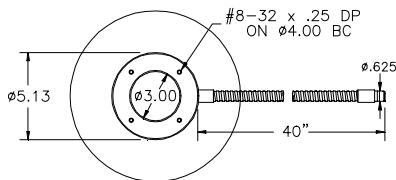
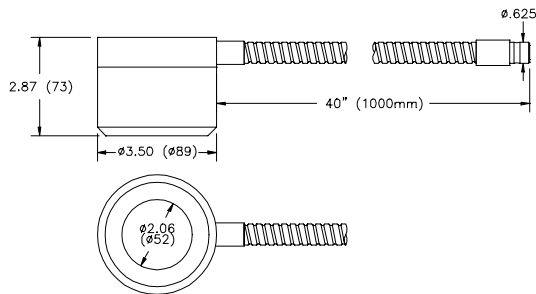
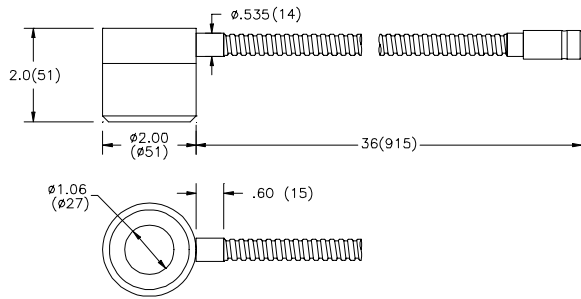
The data on the right displays the typical intensity distribution for our patented Diffuse Ring Illuminators. The 5% uniformity measurement is made over the central 90% of the area and specified using the one sigma point. All uniformity and output measurements are made using an industry standard EKE lamp operating at full intensity. Our units are inspected 100% and are furnished with compliance reports.



Superior Uniformity



Detail Drawings



P/N 9715 1" DRI

Similar in performance and construction to the 9711 with compact size and FOV. Excellent uniformity over 1" FOV with higher intensity. Available with dual and triple fiber feeds for higher intensity and color balance applications. Working Distance .125" to 1" from surface.

P/N 9711 2" DRI

Similar in performance to the 9710 with a more compact size and smaller FOV. Excellent uniformity over 2" FOV with higher intensity. Available with dual and triple fiber feeds for higher intensity and color balance applications. Working Distance .25" to 1.5" from surface.

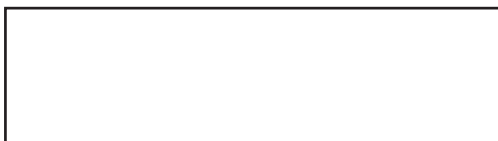
P/N 9710 5" DRI

Highly uniform, diffuse, low-angle, ring illuminator. Large 5" field of view provides excellent area coverage with more than sufficient intensity. Also available with dual and triple fiber feeds for higher intensity and color balance applications. Working Distance 1" to 4" from surface.

P/N 9708 8" DRI

Highly uniform, diffuse, low-angle, ring illuminator. Large 8" field of view provides excellent area coverage with more than sufficient intensity. This unit has triple fiber feeds standard for higher intensity over a large area and color balance applications. Working Distance 1" to 4" from surface.

Proudly Distributed By:



Innovative Photonic Solutions

Illumination Technologies, Inc.

5 Adler Drive 1 East Syracuse 1 New York 13057 USA

TEL: 315-463-4673 1 FAX: 315-463-1401 1 Toll Free (North America): 800-738-4297

Web: <http://www.illuminationtech.com> 1 E-mail: info@illuminationtech.com